



PRODUCT SPECIFICATION

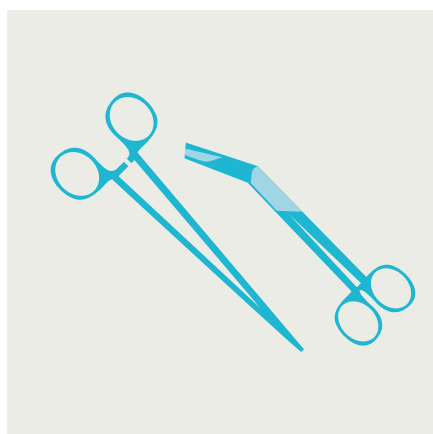
DEKO DC2200 GT
Drying Cabinet



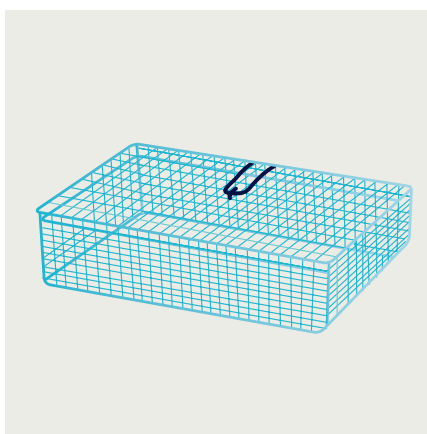
Application

The DC2200GT Drying Cabinet provides safe and effective means to speed up processing of devices in medical and laboratory environments. Time and temperature controls along with effective HEPA filtered airflow allow fast drying of reprocessable devices. Single door and pass-through options for optimising workflows in CSSDs.

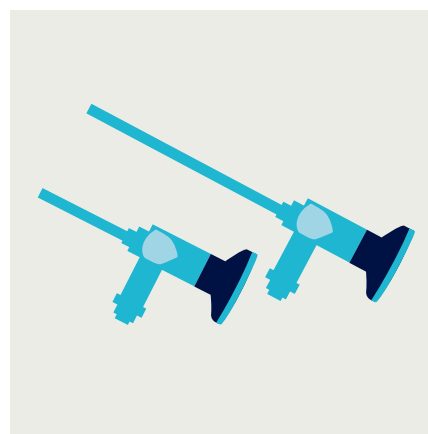
The DC2200GT Drying Cabinet is suitable for automatic drying of medical devices intended for re-use such as;



Surgical instruments and MIS instruments



Instrument trays



Rigid endoscopes



Anaesthetic and respiratory equipment



Glassware



Transit containers

Customise the drying cabinet by selecting desired features

The new DC2200 GT drying cabinet is designed with a modular structure. With adaptability and custom selection of features, the drying cabinet can be easily tailored to meet local needs and requirements.



Main features

Choose one of the options from each category.



Electricity

- 3-phase: 400–415 V, 50/60 Hz, 3x16A
- 1-phase: 230 V, 50/60Hz, 1x16A



Cabinet body

- Single door
- Double door (pass-through)



Door(s)

- Glass door(s)
- Stainless steel door(s)



Inserts

- Shelf set
- Anaesthetic set
- Hose set
- None / tailored

Optional features

Enhance the usability with one or more options.



- Heat exchanger
- Additional hose guides
- Additional shelf rails
- Additional shelves

Features and functionalities

– benefits for the user

Maximised capacity

Stream-lined shape and maximised chamber dimensions with freely adjustable inserts offer a large capacity with flexibility in use.

Efficient drying and increased capacity

HEPA EU13 filtered airflow for safe drying of a wide variety of different devices. Automatic filter quality monitoring and change indication. Even 3 times greater drying efficiency compared to washer- disinfectors, DC2200 GT saves time and energy and frees washer-disinfector capacity.

Programs

Program library with 3 factory-set programs. Programs are easily adaptable to suit instrument processing requirements. Temperature range 30–80 °C, time range 1–180 minutes with optional cooling phase 1–30 minutes in the end. Internal memory provides a pre-set cycle library for creating tailored programs. User adjustable audible indicator notifying end of cycle.

Power options

3-phase / 400–415 V or 1-phase / 230V electrically heated versions.

Single door or double-door

DC2200 GT is available as a single door stand-alone model or as a double-door model for pass-through installations, optimising workflows.

Door(s) and panels

Choose between a glass door for visual process control and capacity checks without cycle interruptions or a cost-efficient solid stainless steel door. Framework, panels and chamber all made of stainless EN 1.4301 steel and fully recyclable. All outer panels and tempered window(s) heat and sound insulated. Check the door handing guide (p.10) to determine the best door handing option for the installation site.

Heat exchanger (optional feature)

An optional heat exchanger generates optimised performance and more economical processes. Equipped with a heat exchanger, the drying efficacy is improved up to 50%, set process temperatures are reached faster and the heat distribution within the chamber is more even. Exhaust air temperature led to property exhaust air channels is even 35% lower and the drying cabinet is 30% more energy efficient. If the heat exchanger is not ordered, the cabinet is fitted with a direct air channel.

Display (loading side)

Easy-to-use touch screen display providing enhanced process control. 3,7" 5-colour touch-screen (alerts in colour). The display provides clear and informative user and service instructions. Cycle phase indication: current cycle name, sequential cycle number, remaining cycle time, current phase and chamber temperature.

Process status indication, unloading side

(double door models)

Coloured led-indicators on unloading side for clear and simple visual detection of process status and remaining cycle time indication.

Independent tamper-proof process verification

Machine is equipped with a temperature indicator, independent from the controller, to allow the user to verify attainment of programmed drying temperature.

Media connections

Media connections are located on top of the machine.

- Exhaust outlet 90 mm
- Electric cable (circuit breaker supply by the buyer /installation party)

Inserts

With a range of different insert sets and accessories available, DC2200 GT can be easily adapted to varied needs.

There are three prefab, expandable insert sets to choose from or the cabinet may be tailored to specific customer needs by selecting a mix & match set of individual inserts. Selection of ready-made sets: shelf set, anaesthetic set and hose set.

See p. 6 for details.

Increased adaptability

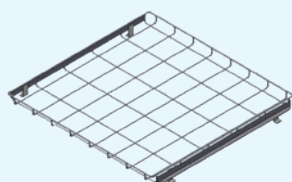
All shelves are independently removable and height adjustable.

Shelves slide out for easier loading and unloading. Shelves require shelf rails. Drying cabinet can be equipped with spare rails to facilitate fast and easy height adjustment of shelves.

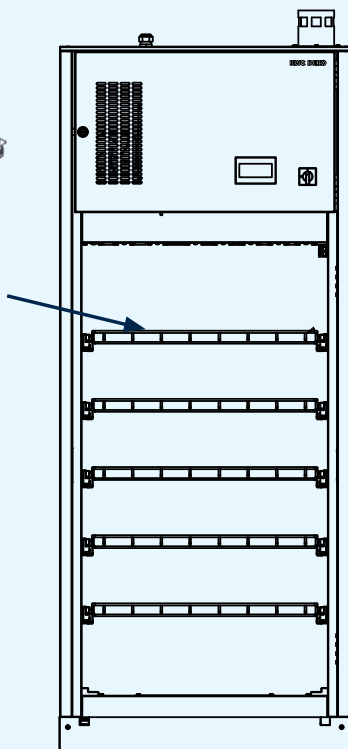
Accessories

Shelf rails and wire shelves (full-and partial-width) are available as accessories. Maximum capacity 13 shelves with 85 mm net clearance.

Separate hose guides for 2 x 6 hoses, placed parallel to the cabinet door on the front of the chamber roof, can be added to any ready-made insert set or chosen as a mix & match accessory. Choose between cassette for AN-hoses (> 15mm) or suction hoses (> 5mm), see pictures on p. 6.



5 full-width s/s wire shelves
(618 x 605 mm)



Shelf set

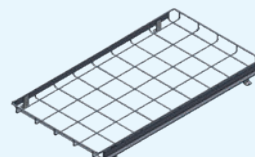
With 5 full-width wire shelves allowing maximum air flow, the shelf set is optimal for drying instruments, hollowware, glassware, containers and similar items. Min. 195 mm clearance between shelves with prefab setting.



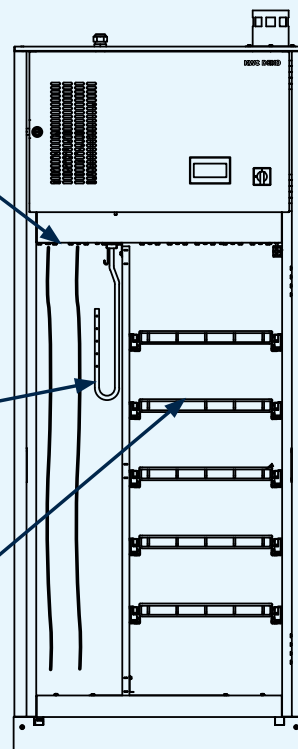
2 cassettes for hoses,
total 26 hoses



1 cassette for
7 respiration bags

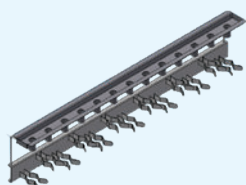


5 s/s wire shelves
(370 x 678 mm)

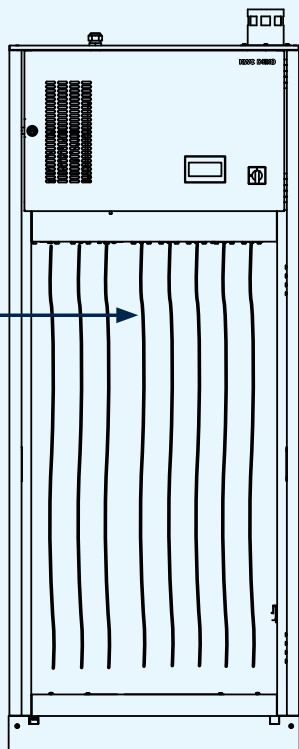


Anaesthetic set

Inserts and couplings for 7 respiration bags and 26 AN hoses + partial-width wire shelves for masks and other devices/instruments. Hose length max. 1200 mm straight hanging.



8 hose guides,
total 104 hoses



Hose set

For drying large amounts of hoses, the chamber roof can be equipped with up to 8 hose guides. With 13 hoses/guide, total capacity is 104 hoses. Hose length max. 1200 mm straight hanging.

Accessories



Cassette for 6 AN-hoses



Cassette for 6 suction hoses



Cassette for 13 hoses

Technical info

Model

Material

Display

3,7" touch-screen

Signal leds on unloading side (double door models)

Door functioning

Manual hinged door

Single door model

Double doors / pass-through model with door interlock

Glass door(s), sound and heat insulated safety glass

Stainless steel door(s), sound and heat insulated

Measurements

Width (mm)

Depth (mm)

Height (mm)

Chamber volume, l (gross)

Chamber volume, l (effective)

Chamber dimensions, mm (gross)

Chamber dimensions, mm (effective)

Weight, kg

Floor loading, kN/cm²

Adjustable feet for levelling ±10 mm

Media connections

Exhaust duct

Required property ventilation (exhaust air) capacity, l/s

Power and electric features

Total power, kW

Heating power, kW

• 400-415V - 3 phase

• 230V - 1 phase

Drying fan, kW

Air throughput, m³/h

Total maximum heat transmission (W/m³)

Maximum fascia heat transmission (W)

Mean sound power level (A), dB

Peak sound power level (A), dB

Electric connection *

Controls/Programmes

Programmability

Pre-set programmes

Customisable programme positions

Cycle status display

Cycle complete indication with mutable buzzer

Password protected modes

Load temperature protection and over temperature cut-outs

HEPA filter condition indication

Automatic maintenance reminder

Standard compliance

RoHS 2011/65/EU

IEC 61010-1

IEC 61326-1

EN ISO 13485

DC2200 GT

Stainless EN 1.4301 steel

X

X

X

X

X

X

X

810

770

1970

613

452

W 686 x D 710 x H 1260

W 600 x D 610 x H 1235

220

0.05

X

ø 90 mm

30

3,6 / 5,7

4,76

3,26

0,4

110

174

120

68

70

U 400-415V 3N AC 50/60Hz 3x16A

U 230V 1N AC 50/60Hz 1x16A

X

3

6

X

X

3

X

X

X

X

X

X

X

Drying cabinet equipped with heat exchanger - a sustainable choice

	Variant	
	3-phase 400-415V	1-phase 230V
Set process temperature reached	35 % faster	50 % faster
Drying time	50 % shorter	50 % shorter
Exhaust air temperature	33 % lower	35 % lower
Energy saving / consumption	30 % less	30 % less

Compared to corresponding standard model with direct air channel.
Results based on 3hr program run with warm cabinet, actual results may vary.

Two door options



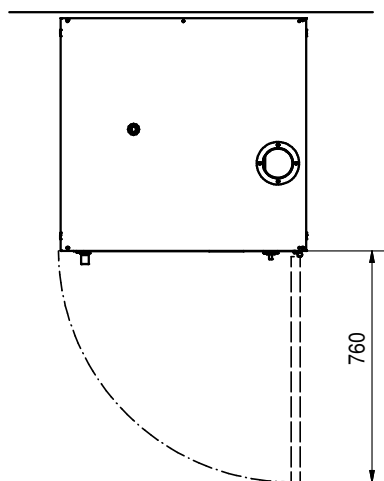
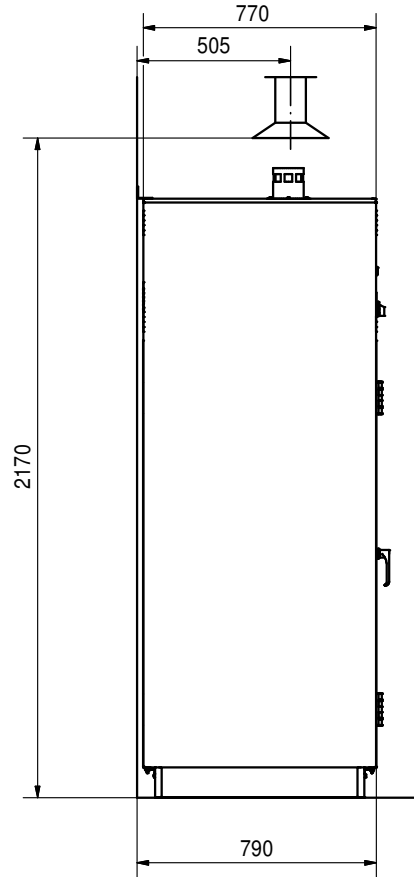
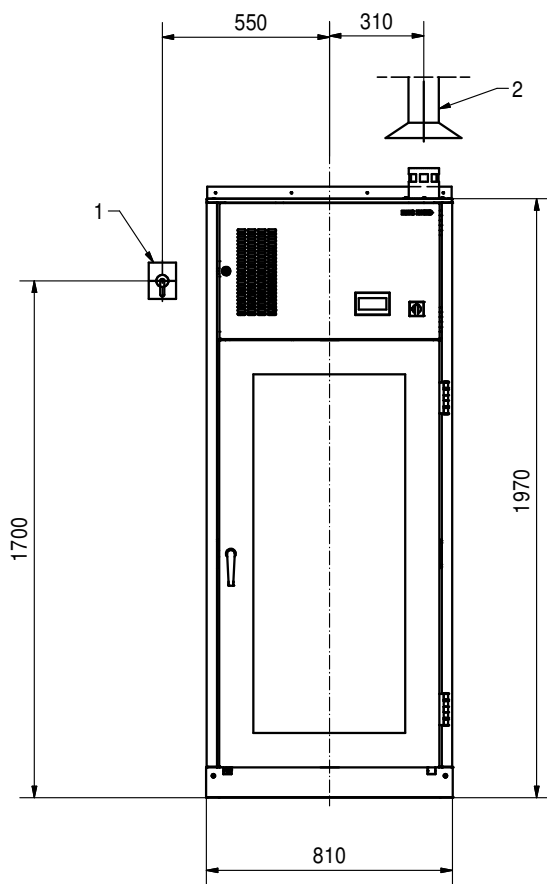
Glass door(s)



Stainless steel door(s)

Installation

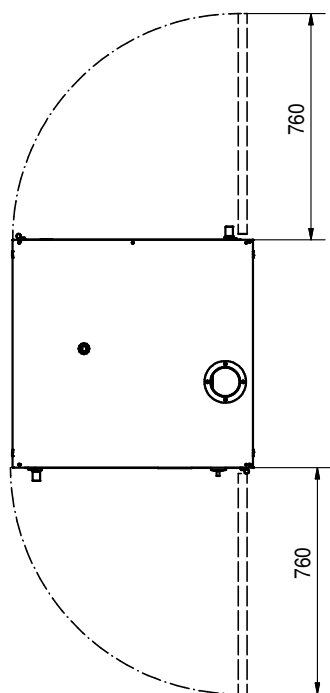
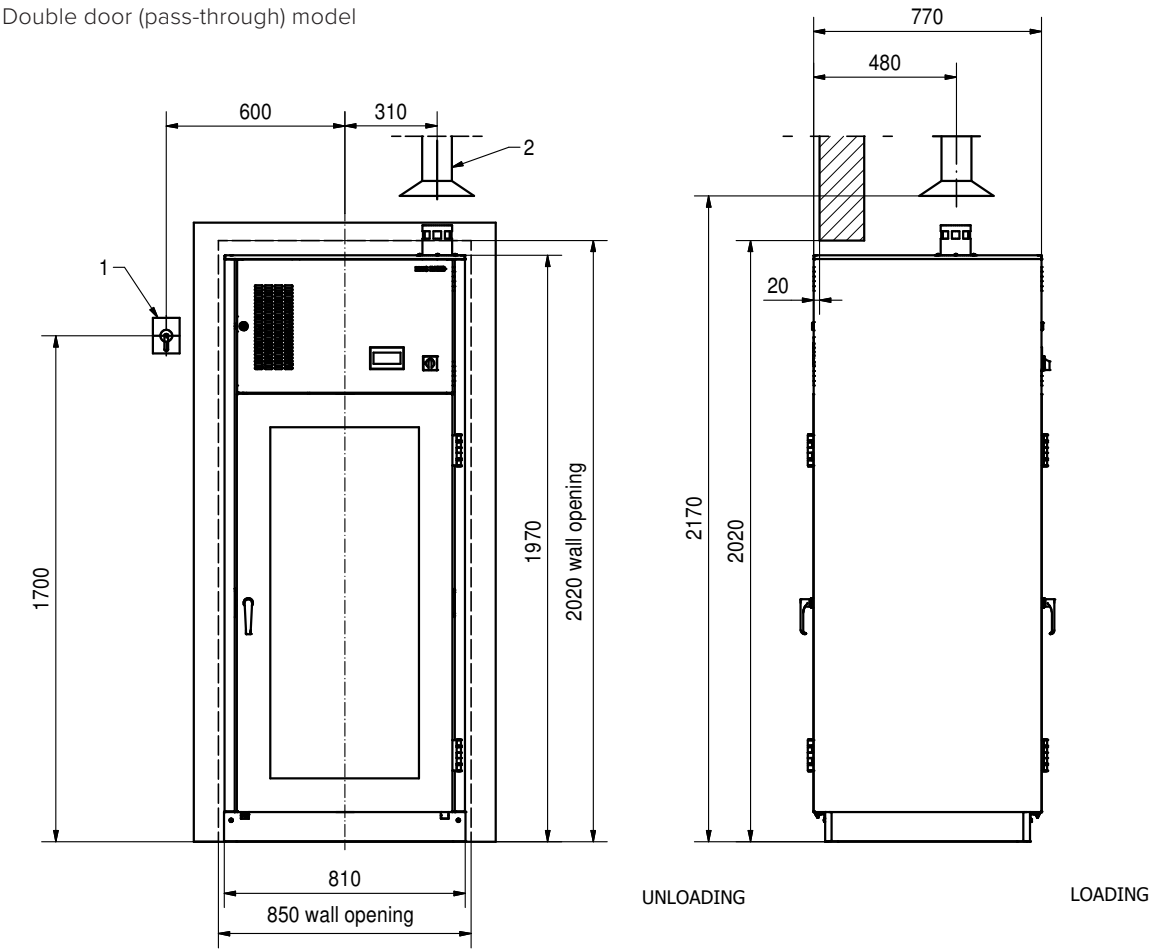
Single door model



- 1. Circuit breaker⁽¹⁾
- 2. Exhaust duct dia 90 mm

⁽¹⁾ Supply by the buyer/installation party

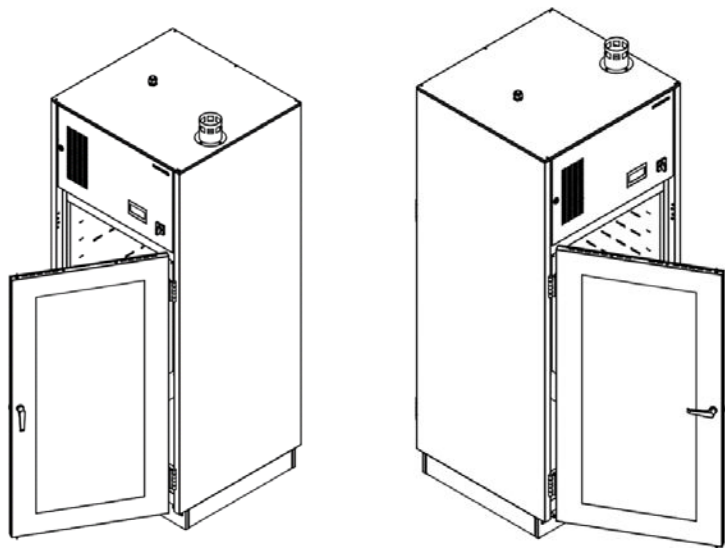
Double door (pass-through) model



Wall opening width: 810 mm + 40 mm,
height: 2020 mm (single machine)

Door handing guide

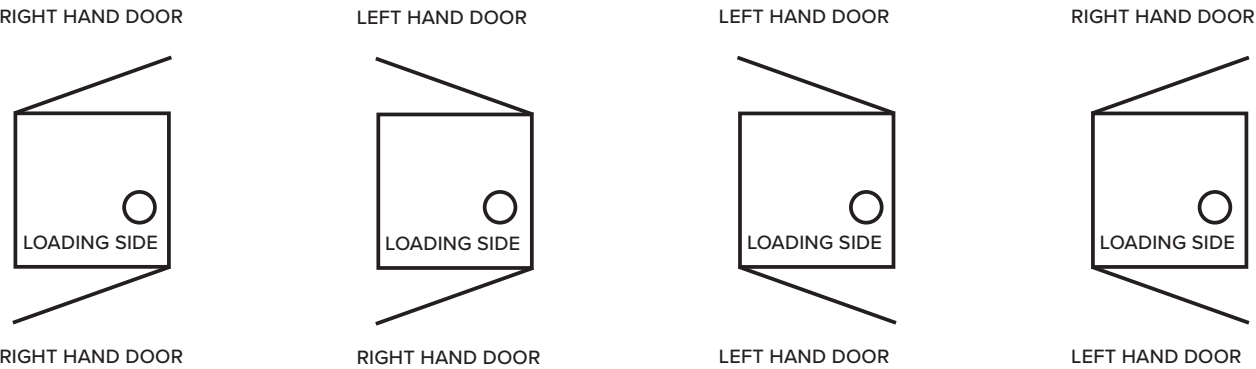
Single door model:



RH = Right-hand door

LH = Left-hand door

Double-door model:

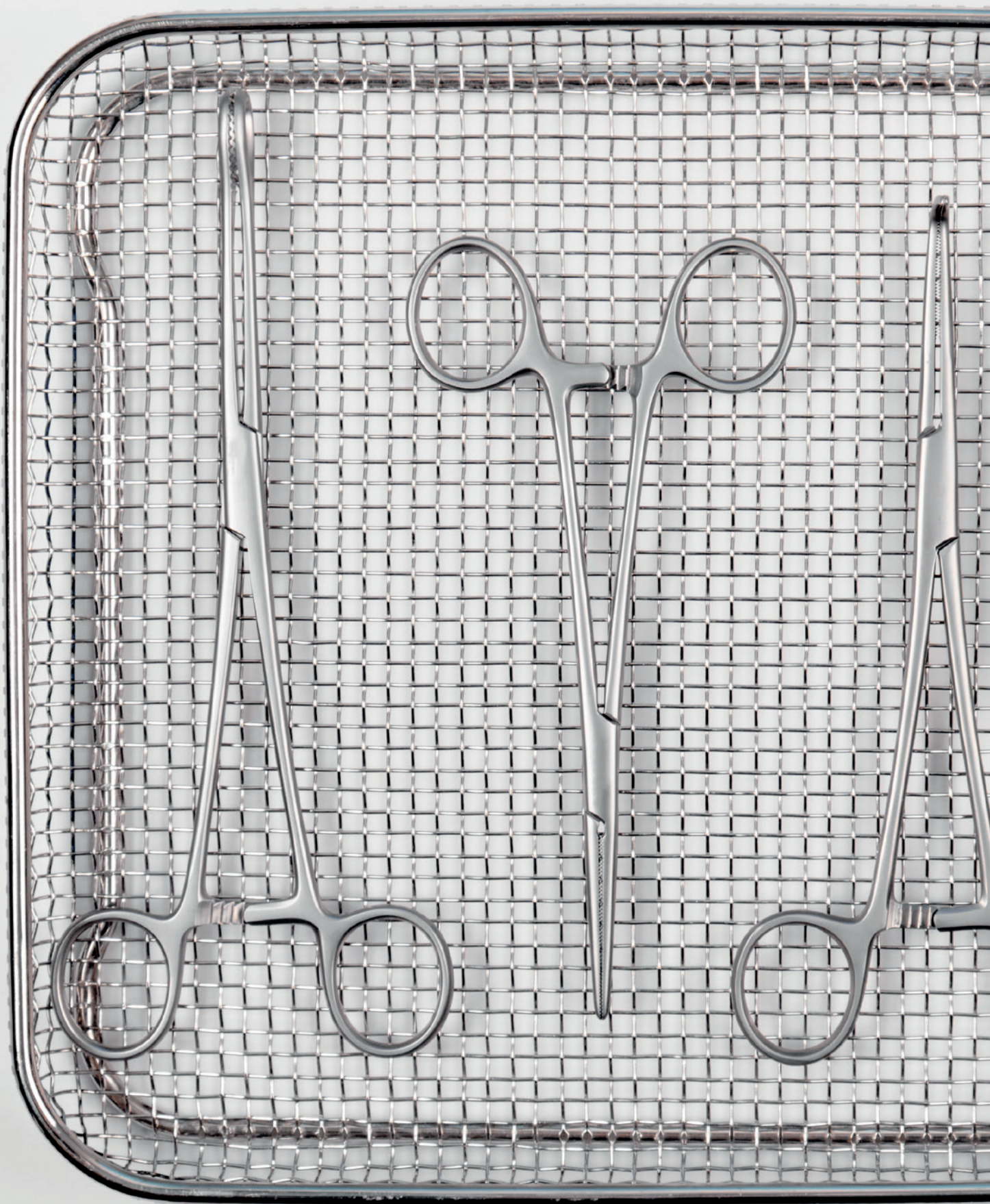


1. RH/RH = Right-hand door loading, right-hand door unloading

2. RH/LH = Right-hand door loading, left-hand door unloading

3. LH/LH = Left-hand door loading, left-hand door unloading

4. LH/RH = Left-hand door loading, right-hand door unloading





DEKO



Quality
ISO 9001

Rhima Australia Pty Ltd

Melbourne

72 -74 Woodlands Drive,
Braeside, VIC 3195

Sydney

Unit 6, 7-9 Percy St,
Auburn, NSW 2144

T +61 3 8586 5444
E sales@rhima.com.au
W www.rhima.com.au

Rhima New Zealand Ltd

Unit 7, 13 Beatrice Tinsley
Crescent, Albany, Auckland
New Zealand 0632

T +64 9 414 5575
E orders@rhima.co.nz
W www.rhima.co.nz

Rhima Singapore Pte Ltd

10 Tampines North Drive 4 #05-09
JTC Space@Tampines North,
Singapore 528553

T +65 9107 8943
E accounts@rhima.sg
W www.rhima.sg