

DVS IN-BUILT WASHER DISINFECTOR

Recessed and pre-assembled frame technical datasheet.



Picture 1

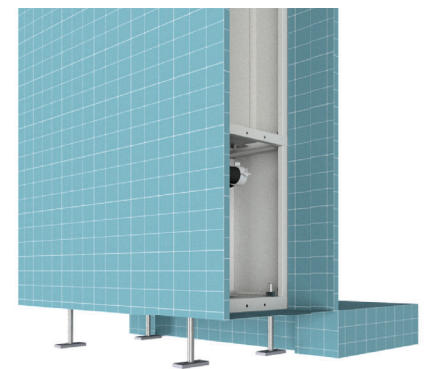
The pre-assembled built-in frame (*Picture 1*) code 111301052 is made of AISI 304 steel and has the self-supporting function of supporting the bedpan washer with ceramic toilet (*purchased separately*).

The load-bearing structure of the frame must be positioned on site before casting the lightened screed so as to be able to fasten the load-bearing structure to the floor using special bars.

The leveling of the frame, once the hardening phase of the lightened screed has been completed, takes place using threaded bars which allow its height to be adjusted and subsequently secured with the aid of nuts (*Pictures 2 & 3*).



Picture 2



Picture 3

Once the frame has been secured to the floor and surrounding walls using the appropriate anchoring brackets, we proceed with the system preparation (*It is advisable to provide water shut-off valves to facilitate maintenance*).

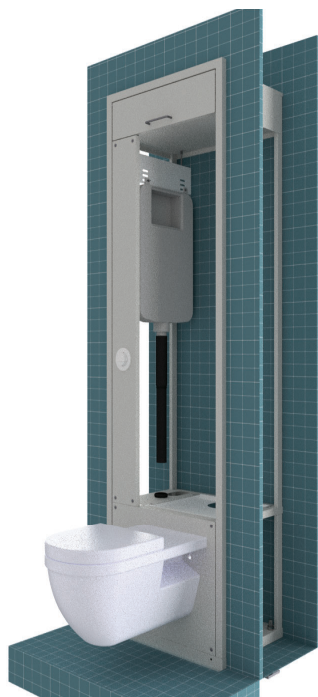
Having connected all the hydraulic and electrical parts of the machine, the pan washer is inserted.

The bedpan washer is bolted to the frame at several points to prevent it from tipping over with the door open.

For the electrical preparation, we recommend an interlocked socket that can be easily reached in the false ceiling, or near the steam generator.



Picture 4



Picture 5

The pan washer has two inspection panels, one located in the upper part of the machine and the second in the lower part, closed by a lock for ordinary/extraordinary maintenance.

The toilet is secured to the frame on special brackets. The pan washer drain is connected to the toilet drain, so as to exit with a single pipe, it is arranged in a flexible way according to the needs of the construction site (*Picture 4*).

The flush cistern (*to be purchased with toilet*) is installed on the side of the frame, and can be easily inspected by removing a panel that allows maintenance (*Picture 5*).

By preparing an adequate opening between the frame of the bedpan washers and the wall in accordance with the installation schematics and considering a tolerance of 4 cm, the external finishing is compensated via a special frame fitted onto the frame (*Picture 6*).



Picture 6