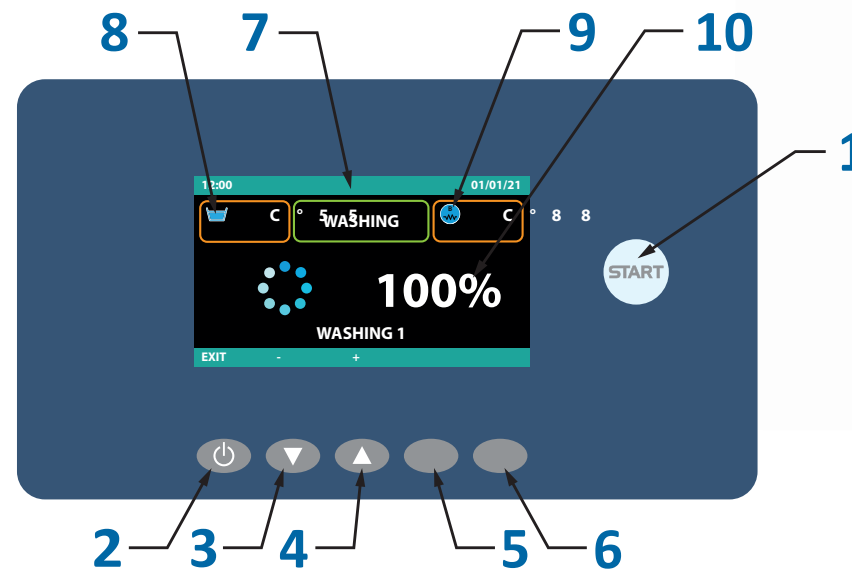


OPERATING INSTRUCTIONS RP-1

- Use only non-foaming, non-chlorinated detergents suitable for automatic dishwashers such as Rhima's range of detergents.
- Ensure clear hose is inserted into the detergent bottle and green hose is inserted into rinse additive bottle.
- For best performance connect machine to HOT water.
- If pre-soaking do not use regular dishwashing liquid as significant foaming may result during the wash cycle.



- (1) Cycle Start/Stop
- (2) ON/STAND-BY
- (3) Cycle Selection
- (4) Cycle Selection
- (5) Push to drain (Not Available)
- (6) Info
- (7) Display
- (8) Tank temperature display
- (9) Boiler temperature display
- (10) Cycle Progress

Operating the machine

INITIAL FILL AND HEATING

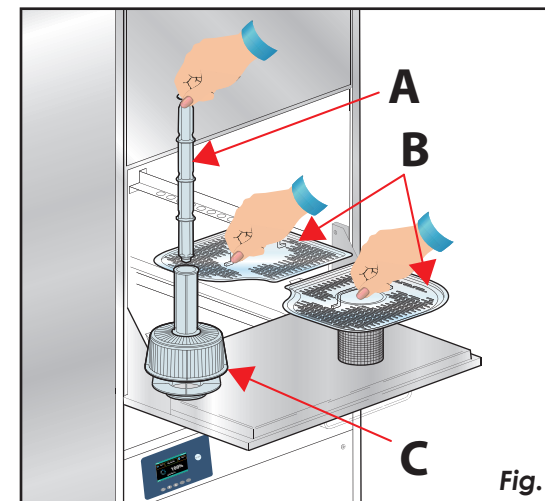
1. Close the door and press the ON/OFF switch (2). The machine's display (7) will change to show **STAND-BY**.
2. The machine start up process will begin with the START button (1) lighting up and the **STAND-BY** message disappearing on the display.
3. The START button (1) will turn white while loading the software then turn red on completion. The tank filling will start with **FILLING WATER** on the display (7). Once filled the display will read **HEATING** until both the wash tank and the boiler have reach their set temperatures (8) and (9). During this process the machine will not allow any cycle to start.
4. The machine is ready for use once the START button (1) turns green.

DISHWASHER OPERATION

1. Place items on the supplied racks ensuring the pots, pans, and bowls do not overlap. Trays are to be placed diagonally in the tray rack and utensils in the basket.
2. Close the door and start the wash cycle by pushing and holding the START button (1) for 1 second.
Note: The desired wash program can be selected by pressing either buttons (3) and (4) or by holding the START button (1) until the desired program is selected then release the button.
3. The wash cycle will begin, and the progress will be indicated in percentage (10) on the display.
4. When the cycle is finished the START button (1) will flash blue/green.
5. The washed items will air-dry within minutes of the door being opened on the washer. The use of rinse additive will improve drying times.

Draining the machine

1. To maintain good wash results, the dishwasher should be drained and refilled every 2-4 hours depending on frequency of use and level of soil/residue on items being washed.
 2. Press button (2) to put the machine in STAND-BY. Remove the SURFACE FILTERS (B) and then remove the OVERFLOW PIPE (A), Fig. 1. The machine will automatically drain.
- WHEN REMOVING THE SURFACE FILTERS (B) FIG.1 CAREFULLY MAKE SURE SCRAPS OF FOOD DO NOT FALL INTO THE DRAIN FILTER (C).**
3. Once the tank has been emptied remove the DRAIN FILTER (C) and wash all items under running water. Refit the PUMP FILTER (C), the OVERFLOW PIPE (A) and the SURFACE FILTERS (B) ready for the next use, Fig. 1.
 4. At the end of the day, the dishwasher should be drained, switched off and the door left open to ventilate.



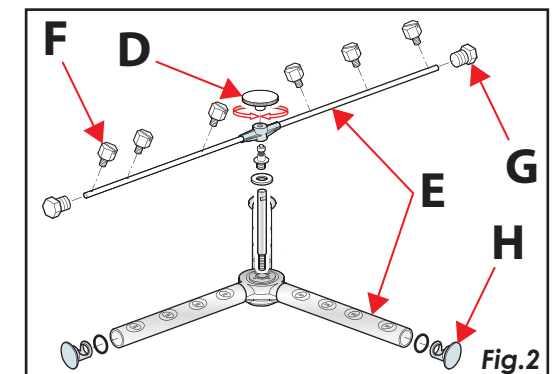
Self Clean Cycle & Regular Maintenance

SELF CLEAN CYCLE

1. The tank must be empty to run the SELF-CLEAN cycle, press and hold the START button (1) for 5 seconds and the SELF-CLEAN cycle will start automatically.
2. On completion, drain the machine by following machine draining instructions.

REGULAR MAINTENANCE

1. Remove the fixing screw (D). Review Fig. 2 to remove parts of the wash/rinse arms (E) for cleaning. The nozzles (F) and end caps (G) & (H) can be removed for cleaning if required. Check that the nozzles (F) are not blocked with food waste.
2. Re-assemble all the parts and put firmly back in place.



3. Remove the HEAT EXCHANGER FILTER (I) and clean it under running water and then refit for next use Fig.3. (HR models only)

