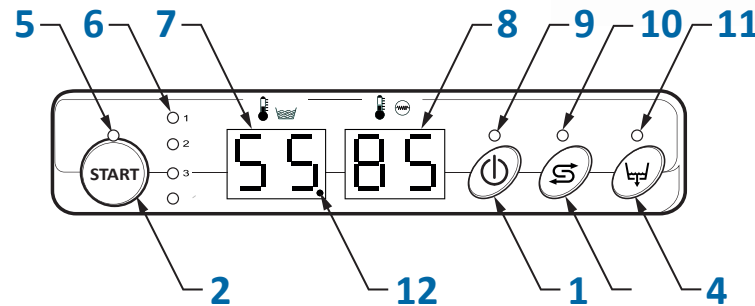


# OPERATING INSTRUCTIONS RM-50

- Use only non-foaming, non-chlorinated detergents suitable for automatic dishwashers such as Rhima's range of detergents.
- Ensure clear hose is inserted into the detergent bottle and green hose is inserted into rinse additive bottle.
- For best performance connect machine to HOT water.
- If pre-soaking do not use regular dishwashing liquid as significant foaming may result during the wash cycle.



- (1) ON/OFF/STAND-BY
- (2) Push button to start cycle/select cycle
- (3) Regeneration button (optional)
- (4) Push to drain (optional)
- (5) Cycle light indicator
- (6) Selected cycle indicator
- (7) Tank temperature display
- (8) Boiler temperature display
- (9) ON/OFF indicator
- (10) Regeneration indicator
- (11) Drain indicator
- (12) Cool extra indicator

## Operating the machine

### INITIAL FILL AND HEATING

1. Close the door and press the ON/OFF switch (1).
2. A green light (9) will now indicate that the machine is switched on and the wash tank of the machine will automatically fill with water to the required level.
3. Machine is ready for use when the tank (7) and the boiler (8) thermometers displays indicate that the required temperatures have been reached which are 50-55°C for the tank and 80-85°C for the boiler.



Display

### DISHWASHER OPERATION

1. Load the rack with plates/cups/glasses ensuring items do not overlap.
2. Close the door and start the wash cycle by pushing and holding the START button (5) for 1 second.  
Note: The 4 wash programs (1, 2, 3, ∞) (6) can be scrolled through by pressing and holding the START button (2). When the desired program is selected release the button.
3. Start the cycle by pushing button (2) for no more than a second. The start of the wash cycle is signalled by the indicator of the selected cycle (6) flashing.
4. When cycle is finished the indicator stops flashing and the message END appears on the display.
5. The washed items will air-dry within a few minutes of being removed from the dishwasher. The use of rinse additive will improve drying times.

## Draining the machine

1. To maintain good wash results, the dishwasher should be drained and refilled every 2-4 hours depending on frequency of use and level of soil/residue on items being washed. At the end of the day, the dishwasher should be drained, switched off and the door left open to ventilate.
2. Leave the machine switched on. Open the door and remove the OVERFLOW PIPE (A) then close the door. Fig. 1

**DO NOT REMOVE THE GREY PLASTIC FILTERS (C) FIG. 1. THESE PREVENT SCRAPS OF FOOD GOING DOWN INTO THE DRAIN PUMP.**

**Blocked drain pumps are not covered by warranty.**

3. Press and hold the Drain Pump button (4) for 1 second.
4. The dishwasher will automatically empty the wash tank and enter standby mode.
5. Open the door and remove the SURFACE FILTERS (B). Remove any food particles from the base of the wash tank and only then remove the plastic PUMP FILTER (C) for cleaning.
6. Refit the PUMP FILTER (C) and SURFACE FILTERS (B) and then the OVERFLOW PIPE (A) before next use.

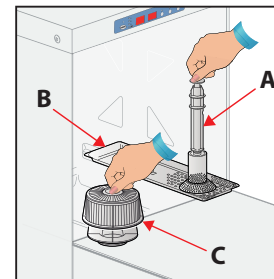


Fig.1

## Self Clean Cycle & Regular Maintenance

### SELF CLEAN CYCLE

1. To run the SELF-CLEAN cycle, press and hold the START button (2) for 5 seconds and the SELF-CLEAN cycle will start automatically.
2. On completion, drain the machine by following machine draining instructions.

### REGULAR MAINTENANCE

1. Remove the fixing screw (G) to remove the wash/rinse arms. Check that the nozzles (E) & (F) are not blocked with food waste. The nozzles (F) can be removed for cleaning if required Fig. 2.
2. Reinstall the wash/rinse arms using fixing screw (G) Fig. 2.

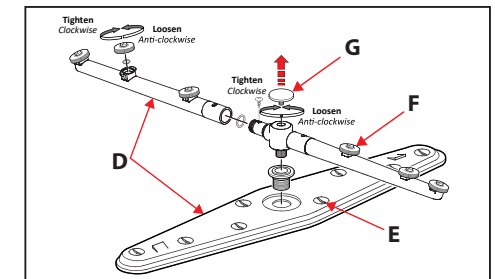


Fig.2