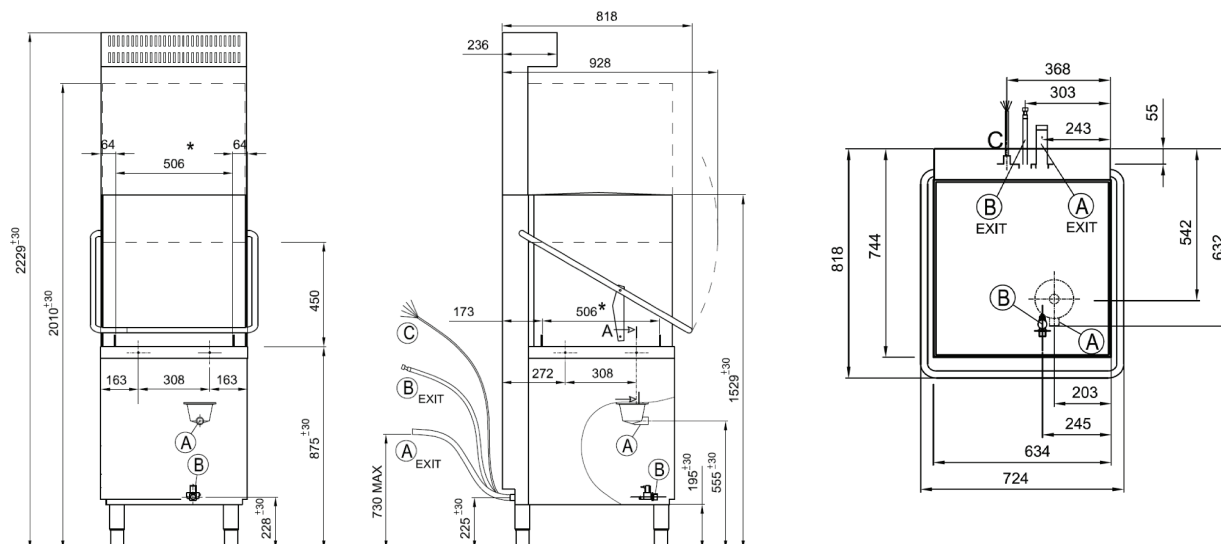


VH-50 HR PASS THROUGH DISHWASHER

The VH50 HR is perfect for small to medium sized cafes and restaurants and allows for a higher capacity. The heat recovery system gives an immediate saving of 1.6kW per hour based on the shortest cycle.



Standard Features

- 4 wash cycles
- Heat recovery unit
- Built-in detergent & rinse aid dispenser
- Door safety switch stops machine if door opened
- Thermostop system ensures 100% sanitisation
- Drain pump to allow for easy connection to drain
- Commercial grade construction
- Designed in Australia, Made in Italy



**WATER
SAVING**



**ECO
FRIENDLY**



Power supply	400V
Total power	8.7KW
Total current	16 Amp
Wash tank capacity	15 ltrs
Water consumption (per cycle)	2 ltrs
Rinsing temp (approx)	80-85°C
Rack size	500mm x 500mm
Tallest washable item	45cm
Weight (empty)	110 kg
Water connection (Hot & Cold water)	3/4" hose
Drain hose diameter	Ø 24mm