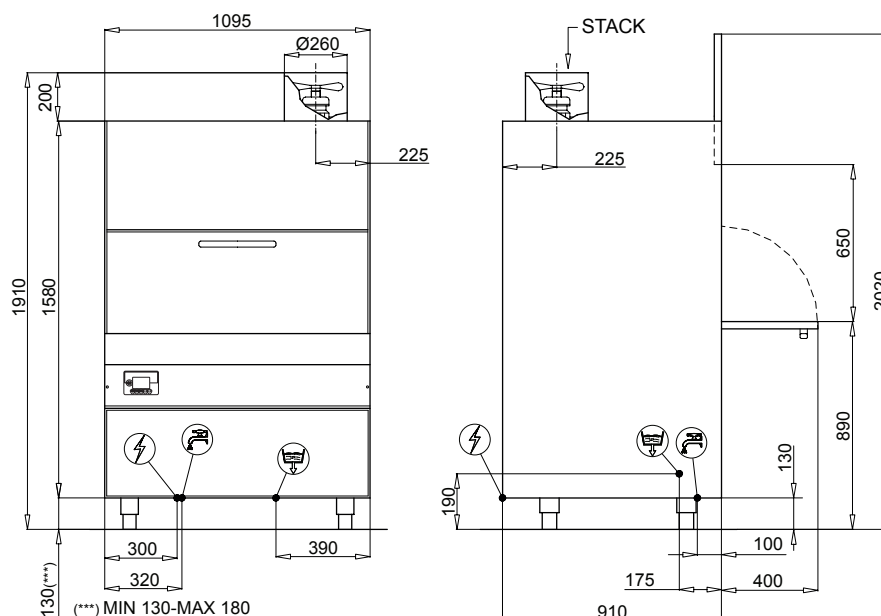


# RG-9 GRANULE WASHER

The RG-9 granule washer utilises the combined action of water, detergent and granules blasted at high pressure. Washing with granules reduces the need for labour intensive pre-washing tasks such as soaking and scrubbing.



## Standard Features

- Built in booster heater and thermostop
- Display showing working temperatures
- Easy access for maintenance
- Concave nozzles to prevent clogging
- Built in detergent/rinse aid dispensers
- Gravity drained



**WATER  
SAVING**



**ECO  
FRIENDLY**



Power supply	415V 50 Hz
Total power	13.8KW
Total current	3 x 20.3 Amp
Wash tank capacity	103 ltrs
Water consumption (per cycle)	4.4 ltrs
Rinsing temp (approx)	85°C
Rack size	Ø 735mm W x 240mm H
Tallest washable item	635mm
Weight (empty)	303 kg
Drain hose diameter	Ø 32mm
Water connection (Hot*)	3/4" hose

\*Connect to hot water for optimum performance