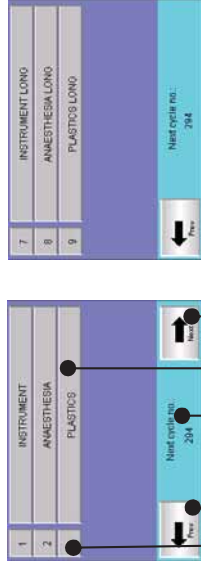


# DEKO 260

## A. HOW TO RUN A CYCLE

1. Open all water supply taps (cold, hot and pure water).
2. Switch power ON, wait a. 15 s and press "USER"- key



- 1 2
- 3 4
- 5

- 1= Cycle checking
- 2= Previous display, main menu
- 3= Next cycle number to run
- 4= Cycle start key (max 6+6)
- 5= Next display

## 3. Loading of the machine

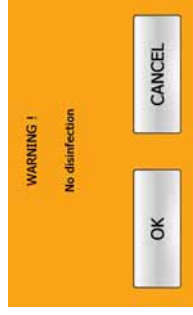
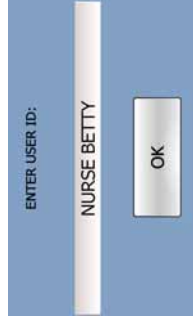
Open the door by turning the door handle upwards and pull the door open. (Power must be ON)

Load the machine.

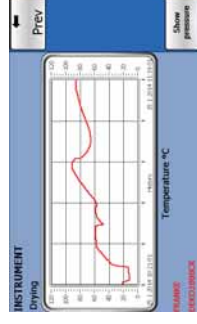
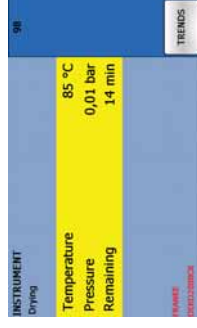
Close the door and lock the door by turning the door handle downwards

4. Start the wanted cycle by pressing the start key.

Enter the user ID, if required. The cycle can be canceled within 5 sec. If the cycle does not include disinfection phase, this will be warned on display and the user must confirm it by pressing OK or cancel it.



## 6. Display views during the cycle:

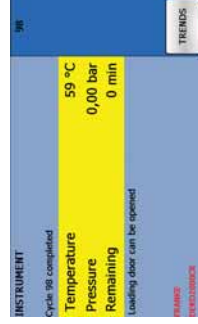


Cycle name:  
 Cycle phase:  
 Chamber temperature:  
 Pump pressure  
 Remaining time:  
 Ongoing cycle number

"INSTRUMENT"  
 "Drying"  
 "85" °C  
 "0,01" bar  
 "14" min (estimate)  
 "98"

'Trend' key for temperature and pressure graph viewing.

## 7. End of cycle



Cycle passed text will appear and (green) will go ON (unloading side only)

It will be warned if the cycle did not include disinfection phase, then also red-light will go ON (on unloading side).

Open the door by turning the door handle upwards and pull the door open.

By pressing the "OK" – key the machine is ready for the next cycle.

**Note ! The door is interlocked without power. Do not close the door without power.**

**Beware of hot steam coming from the chamber after opening the door !**

**Beware of hot items and load carriers!**

## B. MALFUNCTIONS

WARNING situations, which can be controlled by the User, are being indicated as shown below. If the recommended actions have been taken, press the "CONTINUE" key .



## C. FAILED CYCLE

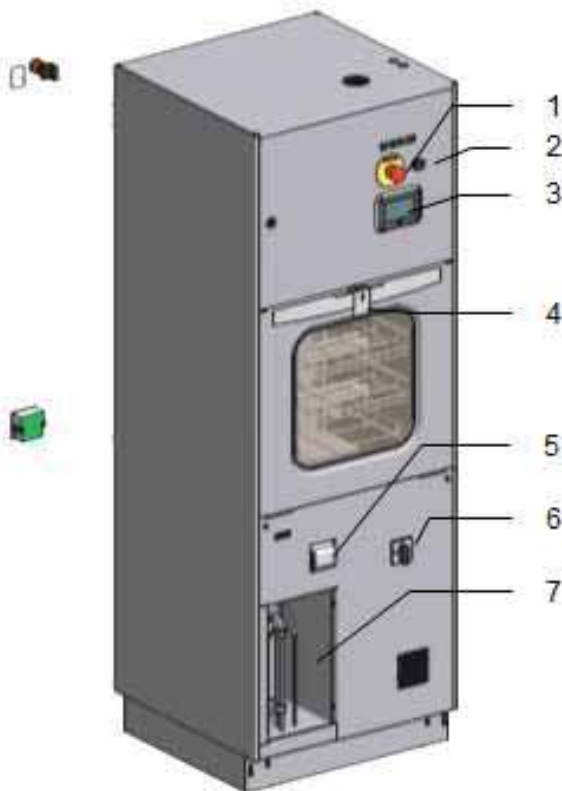
In a Fault condition the fault display appears with the fault code. On unloading side the FAULT-led turns red.



By pressing **Info** - key the possible cause and recommended actions for the repair will be displayed. Service shall always be contacted and called for, if a Fault condition occurs.

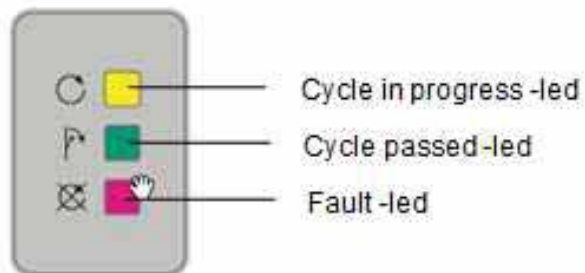
**After an incomplete operating cycle all items in washing chamber must be washed and disinfected again !**

## DEKO 260 CONTROLS



1. Emergency stop (option) (\*)
2. USB memory stick connector
3. Main display; touch screen interface
4. Door handle (\*)
5. Serial printer
6. Main switch
7. Detergent container (lockable door as option)

(\* also on unloading side in pass-through models)



Indication led's on unloading side of pass-through models



Touch screen display for user interface Alphanumeric keyboard to enter characters

USER = user mode  
Change to alphabet/ number  
PROGRAMMING = programming cycles  
SERVICE = service mode



### Note !

The door is interlocked without power.  
Do not close the door without power.