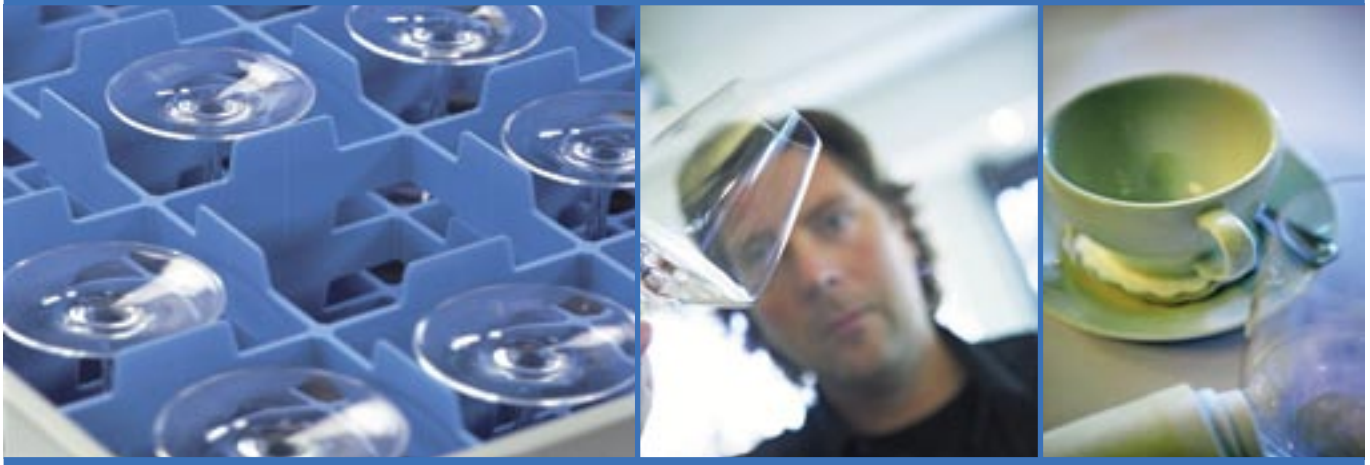


# Hood Type Dishwasher

■ WD-6



# ■ Our history – clean dishes



## Wexiödisk was founded in 1972

The three founder members, with experience from production and development of catering equipment, saw a possibility to supply a range of dishwashers within reach for distributors outside the large established organisations. Through knowledge, foresight and also an ambition to offer something really good a range of quality machines was created. The extraordinary high quality and new innovations gave quick selling success even outside Sweden.

## Our quality

Our ambition from the start has been that all our customers are satisfied. Therefore we focus on being able to offer operation safety, low operation costs and also a good working environment rather than focusing on low price. In other words an early focus on Life Cycle Cost. Excellent dishwashing result goes without saying.

## Our partners

We have carefully chosen our partners who distribute, sell and service our products. Together, through a close dialogue, good product support system and training, we fulfil our customers expectations. Today Wexiödisk is the leading supplier in Scandinavia, with not only a distribution network in Europe but also for example in Japan and Australia. During later years Wexiödisk have even had prestigious projects in the inflight catering sector, a customer group with very high demands.

## Our products

We will continue our focus on product development, to keep and improve customer satisfaction by having a competitive and technically advanced product range. To realize it, we use latest technology together with skilled and competent employees. A complete production set up, from raw materials to final product test, equipped with automated machines and robots secure quality and accessibility.

## Our environmental focus

Dishwashers use large amounts of energy, water and chemicals. Therefore in more recent years Wexiödisk have focused even more on the environmental aspect, which has led to the development of new unique products. ICS+ and DUPLUS are two of the new patented techniques that reduce the environmental impact. This also reflects in a considerable lower operation cost.

## Everyday facts

Wexiödisk is situated in Växjö in South Sweden. The plant is about 11000 m<sup>2</sup>. Number of employees about 175.

## Our ambition

Every installation should be a good reference.



# WD-6 Hood Type Dishwasher

- **Unique hood** – the steam rises behind the machine when the hood is opened.
- **Optimum wash result** through self-draining wash arms.
- **Hygienic** – the machine meets the strictest hygiene requirements through the automatic control of final rinse temperature and water quantity.
- **Ergonomic and efficient** due to the hood opening automatically once the wash program has finished. (EA model)
- **Service-friendly** – service is normally carried out from the front of the machine.



The drying line and basin line are not part of the range.



## WD-6 – a first class, safe, hood type dishwasher with unique hood and long service life

The WD-6 is a traditional hood type dishwasher with a unique hood concept forming one of several innovative solutions. The machine is ideal for small and medium-sized restaurants. A good working environment, high levels of hygiene, easy servicing and optimum wash result make the WD-6 one of the best dishwashers on the market in its segment.

The standard WD-6 design is an electro-mechanical dishwasher with one wash program. The WD-6E with manual hood lift and the WD-6EA with automatic hood lift are electronically-controlled machines, each with three wash programs. The clearance feed height is 400 mm.

The machine has a series of technical features which improve the working environment of users, e.g. the hood tilting forwards as it opens. The steam then rises upwards behind the machine and not into the user's face.

## Designed for strict hygiene requirements and excellent washing result

The wash arms are emptied of washing water when the final rinse starts, in order to give the best possible wash result and high levels of hygiene. When the wash program finishes, the wash goods can be removed from the dishwasher without any remaining washing water dripping on to the clean dishes. Efficient strainers allow for long wash cycles without the water being changed.

The washing and rinsing times of the wash programs can be adjusted to your requirements on the electronic models WD-6E and WD-6EA. The control system monitors all functions, e.g. water quantity and temperature during the final rinse. The remaining washing time can be seen in the control panel display. The electronic function alerts you if the washing temperature is too low. This reduces the risk of foam forming and poorer washing result. An automatic cleaning program makes it easier to clean the inside of the machine.

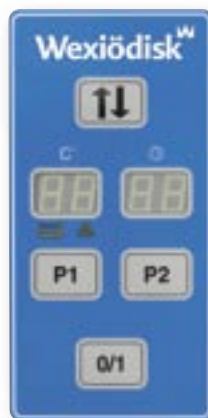
## Ergonomic and efficient - large capacity

The automatic hood is the main difference between the WD-6E and the WD-6EA. On the WD-6EA the hood opens automatically when the wash program is finished. The hood lifts up a few centimetres and then stops to allow the hot steam to rise up behind the machine before the hood lifts up to its highest position. The wash goods start to dry immediately and the basket can be removed from the machine. The next basket can be put in. With the press of a button the hood is closed and the program restarts. The automatic hood improves the ergonomics for the user and the washing is more efficient.

The standard WD-6 design has a washing capacity of 35 baskets per hour. The washing capacity for the WD-6E/6EA is 50 baskets per hour. The electronic machines have a built-in basket counter which displays how many baskets have been washed during the day and also the total number of baskets washed.

## Service-friendly

All WD-6 models are very easy to service. To make service easier, most of the components are easily accessible and service can normally be carried out from the front of the machine.



*The control panel on the electronic machines displays important information such as program selected, remaining washing time, temperatures, alarms, number of baskets washed etc. In addition to displaying the standard program selection of P1-P3, the displays also show when the cleaning program and pause mode (program P0) have been activated.*

# Technical data

| Technical data                    | WD-6 | WD-6 insulated | WD-6E  | WD-6E insulated | WD-6EA |
|-----------------------------------|------|----------------|--------|-----------------|--------|
| Wash pump (kW)                    | 0,9  | 0,9            | 0,9    | 0,9             | 0,9    |
| Booster heater (kW)               | 9    | 9              | 9/12 * | 9/12 *          | 9/12 * |
| Heater tank (kW)                  | 1,8  | 1,8            | 1,8    | 1,8             | 1,8    |
| Tank volume (litres)              | 50   | 50             | 50     | 50              | 50     |
| Weight, machine in operation (kg) | 150  | 160            | 150    | 160             | 165    |
| Degree of protection (IP)         | 45   | 45             | 45     | 45              | 45     |

\* 12 kW booster heater is optional equipment.

| Capacity and operation data                 | WD-6    | WD-6 insulated | WD-6E   | WD-6E insulated | WD-6EA  |
|---------------------------------------------|---------|----------------|---------|-----------------|---------|
| Total time/wash program 1 (min)             | 1,5     | 1,5            | 1,2 **  | 1,2 **          | 1,2 **  |
| Total time/wash program 2 (min)             | --      | --             | 1,7 **  | 1,7 **          | 1,7 **  |
| Total time/wash program 3 (min)             | --      | --             | 3,2 **  | 3,2 **          | 3,2 **  |
| Capacity, max. (baskets/h)                  | 35      | 35             | 50      | 50              | 50      |
| Basket size (mm)                            | 500x500 | 500x500        | 500x500 | 500x500         | 500x500 |
| Water consumption, rinse / program (litres) | 4       | 4              | 4       | 4               | 4       |
| Energy consumption (kWh of connected power) | 70-90%  | 70-90%         | 70-90%  | 70-90%          | 70-90%  |
| Sound level * (dB(A))                       | 64      | 61             | 64      | 61              | 61      |
| Max. surface temp. at room temp. 20°C (°C)  | 56-63   | 33             | 56-63   | 33              | 33      |

\* Measured 1 metre from the machine

\*\* Factory setting. The wash time is adjustable.

| Connection, machine                                        | WD-6 | WD-6 insulated | WD-6E      | WD-6E insulated | WD-6EA     |
|------------------------------------------------------------|------|----------------|------------|-----------------|------------|
| Total connected power (kW)                                 | 9,9  | 9,9            | 9,9/12,9 * | 9,9/12,9 *      | 9,9/12,9 * |
| Main fuse 400V 3N~ (A) **                                  | 16   | 16             | 16/20 *    | 16/20 *         | 16/20 *    |
| Max. conn.area 400V 3N~ (L1-L3,N,PE) Cu (mm <sup>2</sup> ) | 6    | 6              | 6          | 6               | 6          |

\* With 12 kW booster heater (optional).

\*\* Other voltages on request.

| Connection water, drain and ventilation                 | WD-6  | WD-6 insulated | WD-6E | WD-6E insulated | WD-6EA |
|---------------------------------------------------------|-------|----------------|-------|-----------------|--------|
| Water quality, hardness (°dH)                           | 2 - 7 | 2 - 7          | 2 - 7 | 2 - 7           | 2 - 7  |
| Hot water connection 50 - 70°C (external thread)        | R ½"  | R ½"           | R ½"  | R ½"            | R ½"   |
| Cold water connection 5 - 12°C * (external thread)      | --    | --             | R ½"  | R ½"            | R ½"   |
| Drain connection, PP pipe (ø mm)                        | 50    | 50             | 50    | 50              | 50     |
| Water capacity hot water, pressure (kPa) **             | 180   | 180            | 180   | 180             | 180    |
| Water capacity hot water, flow (litres/min)             | 18    | 18             | 18    | 18              | 18     |
| Water capacity cold water, hood lift, pressure (kPa) ** | --    | --             | --    | --              | 300    |
| Water capacity cold water, hood lift, flow (litres/min) | --    | --             | --    | --              | 2      |
| Floor drain, capacity (litres/sec)                      | 3     | 3              | 3     | 3               | 3      |
| Ventilation of the machine (m <sup>3</sup> /h)          | 600   | 600            | 600   | 600             | 600    |

\* With 12 kW booster heater and for the hood lift on the WD-6EA.

\*\* With lower pressure the machine should be fitted with booster pump.

| Size and weight for transportation | WD-6         | WD-6 insulated | WD-6E        | WD-6E insulated | WD-6EA       |
|------------------------------------|--------------|----------------|--------------|-----------------|--------------|
| Size, LxWxH (mm) *                 | 765x710x1560 | 765x710x1560   | 765x710x1560 | 765x710x1560    | 765x710x1560 |
| Weight (kg) *                      | 105          | 115            | 105          | 115             | 120          |

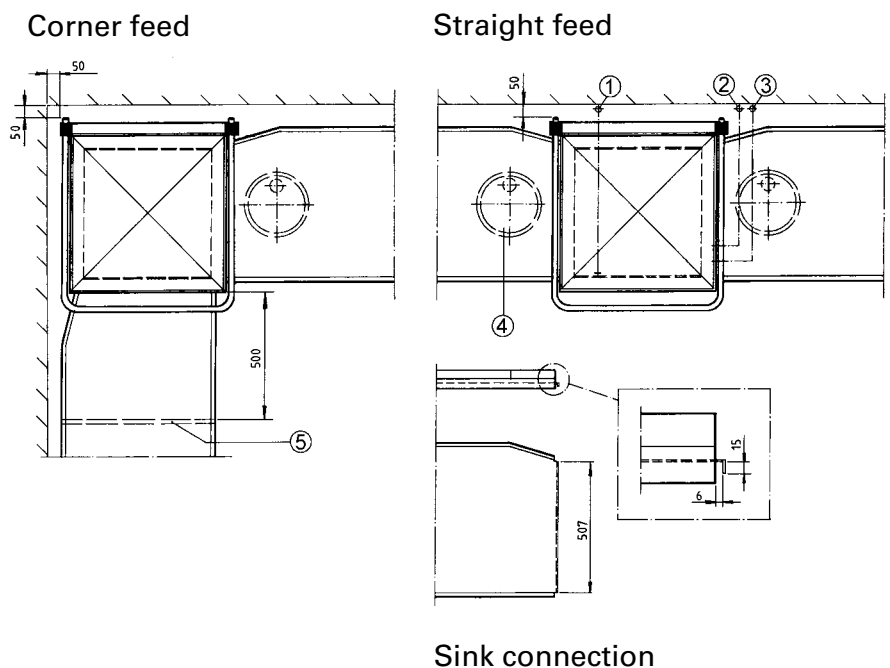
\* Packaging included

# Article numbers - Extra equipment

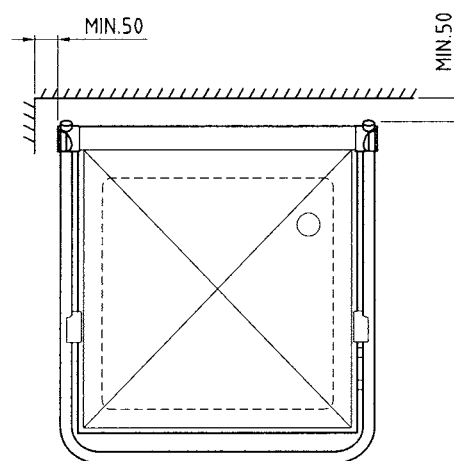
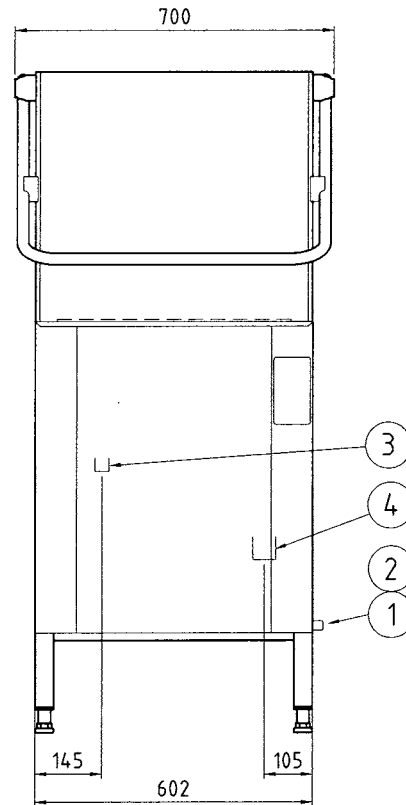
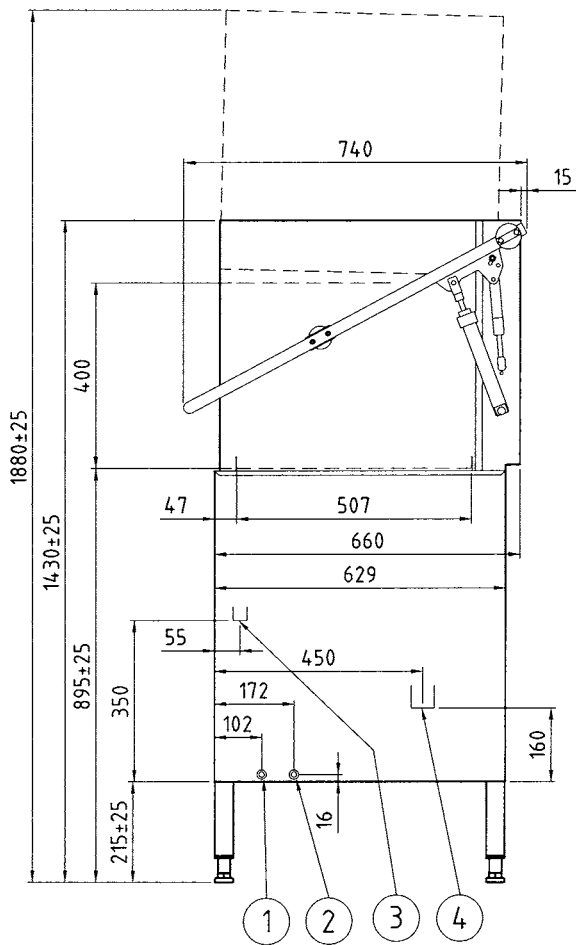
| Machine model                                           | Art. no.        | Dimensions in mm<br>LxWxH | Booster heater | Electrical connection    |
|---------------------------------------------------------|-----------------|---------------------------|----------------|--------------------------|
| WD-6                                                    | 2-0600          | 600x675x1430/1875         | 9 kW           | 400V 3N~ 50Hz 9,9kW 16A  |
| WD-6 insulated                                          | 2-0603          | 600x675x1430/1875         | 9 kW           | 400V 3N~ 50Hz 9,9kW 16A  |
| WD-6E                                                   | 2-0605          | 600x675x1430/1875         | 9 kW           | 400V 3N~ 50Hz 9,9kW 16A  |
| WD-6E insulated                                         | 2-0606          | 600x675x1430/1875         | 9 kW           | 400V 3N~ 50Hz 9,9kW 16A  |
| WD-6EA                                                  | 2-0607          | 600x675x1430/1875         | 9 kW           | 400V 3N~ 50Hz 9,9kW 16A  |
| <b>Extra equipment WD-6/E/EA</b>                        | <b>Art. no.</b> |                           |                |                          |
| Connection pipe with re-suction protection (WD-6/6E)    | 2-0657          |                           |                |                          |
| Connection pipe with re-suction protection (WD-6EA)     | 2-0658          |                           |                |                          |
| Steam hood with suction connection $\varnothing$ 160 mm | 2-0660          |                           |                |                          |
| Automatics for suction fan (1-phase closing contact)    | 2-0660A         |                           |                |                          |
| Detergent dosing for liquid detergent                   | 2-0662          |                           |                |                          |
| <b>Extra equipment only for WD-6E, WD-6EA</b>           | <b>Art. no.</b> |                           |                |                          |
| Booster pump WD-6E                                      | 2-0651E         |                           |                |                          |
| Booster pump WD-6EA                                     | 2-0651EA        |                           |                |                          |
| Booster heater 12 kW only for cold water connection     | 2-0653E         |                           | 12 kW          | 400V 3N~ 50Hz 12,9kW 20A |
| Emptying pump WD-6E                                     | 2-0655E         |                           |                |                          |
| Emptying pump WD-6EA                                    | 2-0655EA        |                           |                |                          |

## Connection

1. Electrical connection
2. Cold water connection (WD-6EA)
3. Hot water connection
4. Floor drain, capacity 3 l/sec.
5. Legs. Placed min. 500 mm in front of the machine.



# Dimensional drawings



1. Hot water connection, ext. thread R ½" 180 kPa 18 l/min.
2. Cold water connection hood lift (WD-6EA) ext. thread R ½" 300 kPa 2 l/min.
3. Electrical connection.
4. Drain connection ø 50 mm 3 l/sec.





Rhima Australia Pty Ltd  
72-74 Woodlands Dve  
PO Box 605  
Braeside, Vic 3195

Ph: 03 8586 5444  
Fax: 03 8586 5454

[www.rhima.com.au](http://www.rhima.com.au)

**rhima**  
the power of clean