

Hood Type Dishwasher

■ WD-7



Erwin

Our history – washing up the right way!

Wexiödisk started up in 1972

Wexiödisk is a Swedish company founded in 1972 which ever since it opened for business has focused on offering the institutional catering sector the absolute best in dishwashers. The extraordinarily high quality and new innovations soon meant successful sales results.

Quality

Our ambition for all our customers to be satisfied has been our ethos right from the very beginning. So we have focussed on being able to provide reliable machines with low operating costs and a good working environment rather than a low purchase price, i.e. an early focus on Life Cycle Cost. Excellent cleaning results have always been seen as a matter of course.

Partners

We have selected our partners for the distribution, sales and service of our products with great care. We are in close contact with them, provide product support and training and ensure that we meet the customer's expectations together. Today Wexiödisk is the market leader in Scandinavia with a distribution network covering not only Europe but also, for example, Japan and Australia. In recent years Wexiödisk has also won several prestigious contracts within flight catering, which is a customer group with extremely high requirements.

Products

We will continue to invest significantly in product development in order to maintain and develop value to customers through a technologically advanced and competitive range of products. To assist us we have well-trained staff and hi-tech facilities. A complete production line, from plate-working to trial runs and equipped with automatic workshop machinery and robots, ensures top quality and availability.

Thinking about the environment

Dishwashers consume large amounts of energy, water and chemicals. So in recent years, Wexiödisk has concentrated more on the environmental side of things, which has led to the development of several new and unique products. ICS+ and DUPLUS are the names of two patented principles that provide an exceptionally reduced environmental impact and considerably lower operating costs.

Everyday life

Wexiödisk is based in Växjö in the south of Sweden. We have a working space of approx. 11,000 m² at our disposal and we have about 175 people working for us.

Our ambition

– Every new installation must result in a good reference!

■ The WD-7 makes it easier to wash up and guarantees the washing results!

Never before has it been easier to wash loads than with Wexiödisk's WD-7 hood dishwasher. A robust and simple basic design with the ultimate in components and materials all guarantee reliable operation for many years to come. All this, in combination with Swedish engineering, to optimise function and handling, has created a unique product for even the most demanding of customers.

Efficient, ergonomic and robust

If you'd like the most customer-friendly dishwasher there is then opt for a WD-7 with "Autostart". Nothing could be simpler. Slide the basket into the machine. The automatic system closes the hood and starts the machine. The hood opens automatically once the washing programme has finished. The washed items are sparklingly clean and start to dry immediately, with the machine ready for the next basket.

You can quickly and easily reset the machine to wash "heavily soiled" loads. This function, in combination with three different programmes to choose from, solves the varying needs of any kitchen. The feed clearance height of 500 mm and the internal width of 610 mm enables not only plates, glassware and cutlery to be cleaned, but also baking trays, bread baskets, large bowls, GN containers etc.

The hood's ingenious function during the opening phase directs the steam upwards behind the machine and not into the operator's face. In order to improve the working environment in the dishwashing room, a special steam hood is available as an accessory, with or without a condenser.

The washing process ends with an effective final rinse. To achieve optimal washing results and good hygiene, the wash arms are spin drained at the start of the rinsing phase. This prevents any residual washing water dropping down from the top wash arm on to the clean items. An automatic cleaning program makes it easier to clean the inside of the machine.

A powerful electronic control system monitors the HACCP functions and ensures that preset parameters are achieved. As alternatives to the "Autostart" model, the machine is also available with a manual hood or an automatic hood, which is activated by a push button on the control panel.

The well-thought-out position of components, something which for many years has distinguished Wexiödisk's products, lives on. Most of the components are easily accessible and servicing can be carried out from the front of the machine. The electronics also allow a history log and service information to be displayed during maintenance work.

A fantastic new day – everyday!



■ Lots of features with the WD-7

- Functional design
- Powerful electronics
- Even better washing results
- Maximum hygiene
- Ergonomic and efficient



The design of the fixed basket conveyor contributes to improved washing results. The water jets can pass freely and reach right into the corners of the basket.



Just one of the features to guarantee washing results is a deep tank that reduces the risk of foam forming.



Effective strainers reduce the need for water changes during the day.

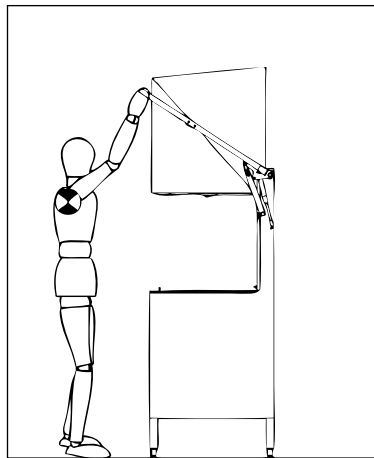


The shelf for storing chemicals improves the working environment and makes floor cleaning easier. *



In order to satisfy the varying needs of the kitchen, the machine has a unique washing system which can easily be reset for heavily soiled or normal loads.





The automatic hood eliminates the risk of staff getting repetitive strain injuries.*



To achieve a good working environment in the dishwashing room a steam hood is available as an accessory, either with or without a condenser.* Automatics to exhaust fan is standard equipment.



WEB Tool for single-tank machines is an option that simplifies the everyday work for you that makes HACCP reports by hand. Using an ordinary Internet browser like Internet Explorer you create your HACCP documentation directly from the machine.

From now on no one needs to keep a manual log of temperatures to fulfil and satisfy current hygiene requirements, in accordance with HACCP. Say goodbye to unnecessary paperwork, saving valuable time in the kitchen.



Reliable and easily serviced automatic hood with water-powered system.*



A powerful control system incl. HACCP, offers great flexibility with the three easily accessible programme buttons etc.

*option

Technical data

Technical data	WD-7
Wash pump (kW)	1.1
Booster heater (kW)	9/12*
Heater tank (kW)	1.8
Tank volume (liter)	50
Weight, machine in operation (kg)	170
Degree of protection (IP)	45

* 12 kW booster heater is optional.

Capacity and operation data	WD-7
Total time/wash program 1 (min)	1.2**
Total time/wash program 2 (min)	1.7**
Total time/wash program 3 (min)	3.2**
Capacity, max (baskets/h)	50
Water consumption rinse/program (litres)	4
Energy consumption (kWh of connected power)	70-90%
Sound level (dB(A)) normal pressure/high pressure*	63/65

* Measured 1 metre from the machine.

** Factory setting. The wash time is adjustable.

Connection, machine	WD-7
Total connected power (kW)	10.1/13.1*
Main fuse 400V 3N~ (A)**	16/20*
Max.conn.area 400V 3N~ (L1-L3,N,PE) Cu (mm ²)***	2.5

* With 12 kW booster heater (optional).

** Other voltages on request.

*** Cable 2m H07RN-F included.

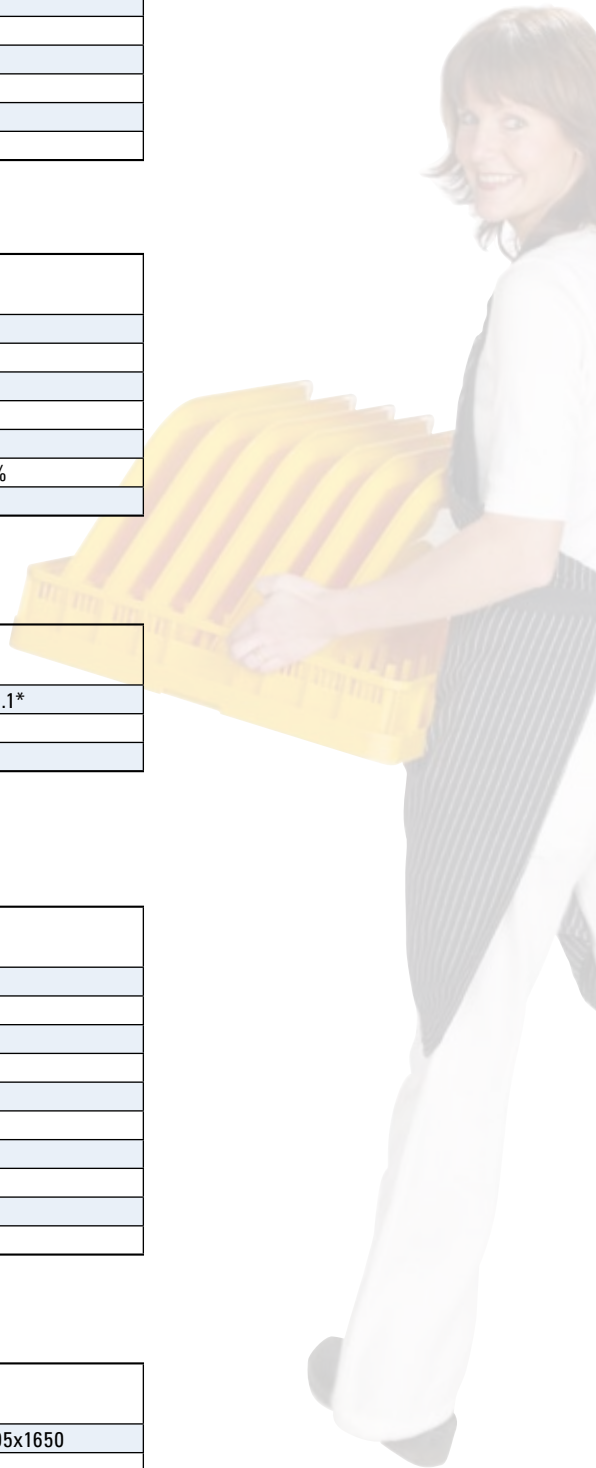
Connection water, drain and ventilation	WD-7
Water quality, hardness (°dH)	2 - 7
Hot water conn. 55-70°C (external thread)	R ½"
Cold water conn. 5-12°C * (external thread)	R ½"
Drain connection, PP pipe (ø mm)	50
Water capacity warm water, pressure (kPa) **	180
Water capacity warm water, flow (litres/min)	18
Water capacity cold water hood lift, pressure (kPa) **	300
Water capacity cold water hood lift, flow (litres/min)	2
Floor drain, capacity (litres/sec)	3
Ventilation of the machine (m ³ /h)	600

* Recom. only together with 12kW booster heater.

** With lower pressure the machine should be fitted with booster pump.

Size and weight for transportation	WD-7
Size LxWxH (mm) *	765x805x1650
Weight (kg) *	125

* Packaging included.

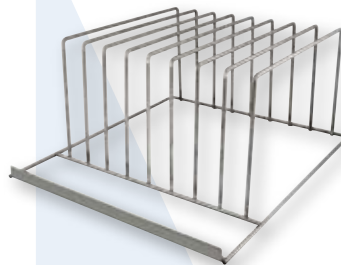


Additional equipment

Machine model	Part. no	Measure in mm LxBxH	Booter heater	Electrical connection
WD-7	203-0700	657x660x1540	9 kW	400V 3N~ 50Hz 10,1 kW 16A
Options				
Auto hood				
Autostart for auto hood				
230V/3/50Hz				
Marine version 400/3/50Hz without neutral				
Marine version 440/3/60Hz without neutral				
Liquid detergent dosing unit				
Panel on left side				
Internal cabinet for chemicals				
Booster heater 12 kW for only cold water connected machine. Connection power 13,1 kW, 20 A. Capacity: 36 baskets/hour. Not in combination with air-gap.				
Booster pump to auto hood				
Booster pump to rinse Not in combination with air-gap				
Booster pump to rinse and auto hood Not in combination with air-gap				
Automatic drain pump.				
Air-gap only in combination with 9 kW boiler.				
WEB Tool				
Additional equipment				
	Part. no			
Connection pipe with non return valve, vacuum valve and tap. To WD-7 without auto hood and WD-7 with booster pump, with/without auto hood	203-0672			
Connection pipes to WD-7 with auto hood	203-0673			
Exhaust hood with connection 160 mm	203-0730			
Shelf for chemicals on the right side	203-0663			
Shelf for chemicals on the left side	203-0664			
Exhaust hood with condenser to WD-7	203-0731			
Dual control for auto hood	203-0668			
Higher work height + 35 mm	203-0669			
Rack for 8 pcs baking plates (450x600 mm)	203-0733			
Special rack for containers	4550070			



Basket, part no. 9-9025
Special rack part no. 4550070



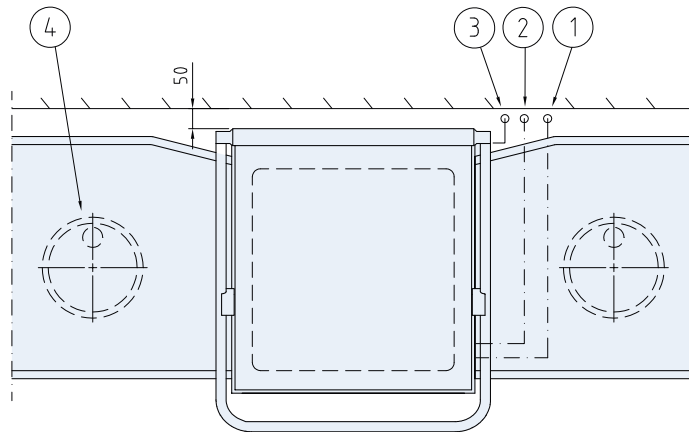
Rack for baking plates.
Part no. 203-0733



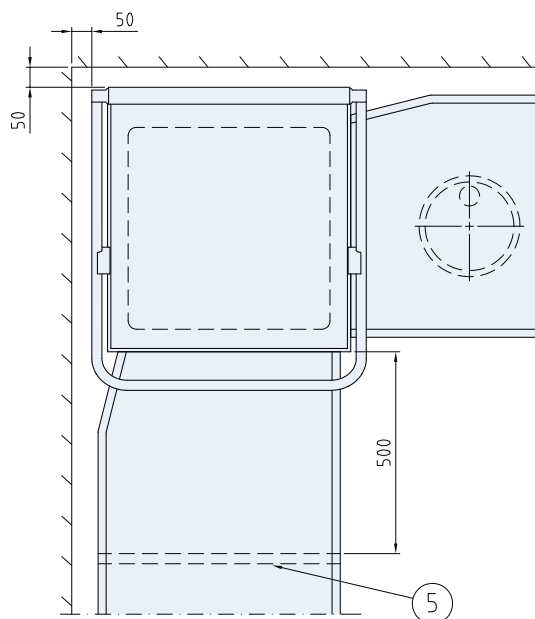
Also possible to wash bread baskets.
(Not part of the range.)

■ Connection

Straight feed

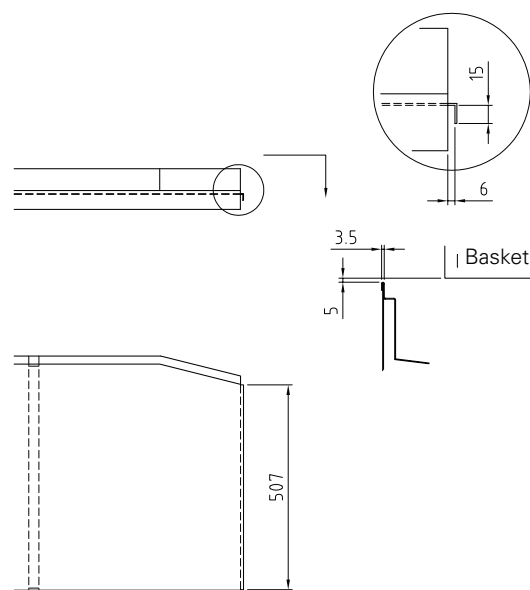


Corner feed

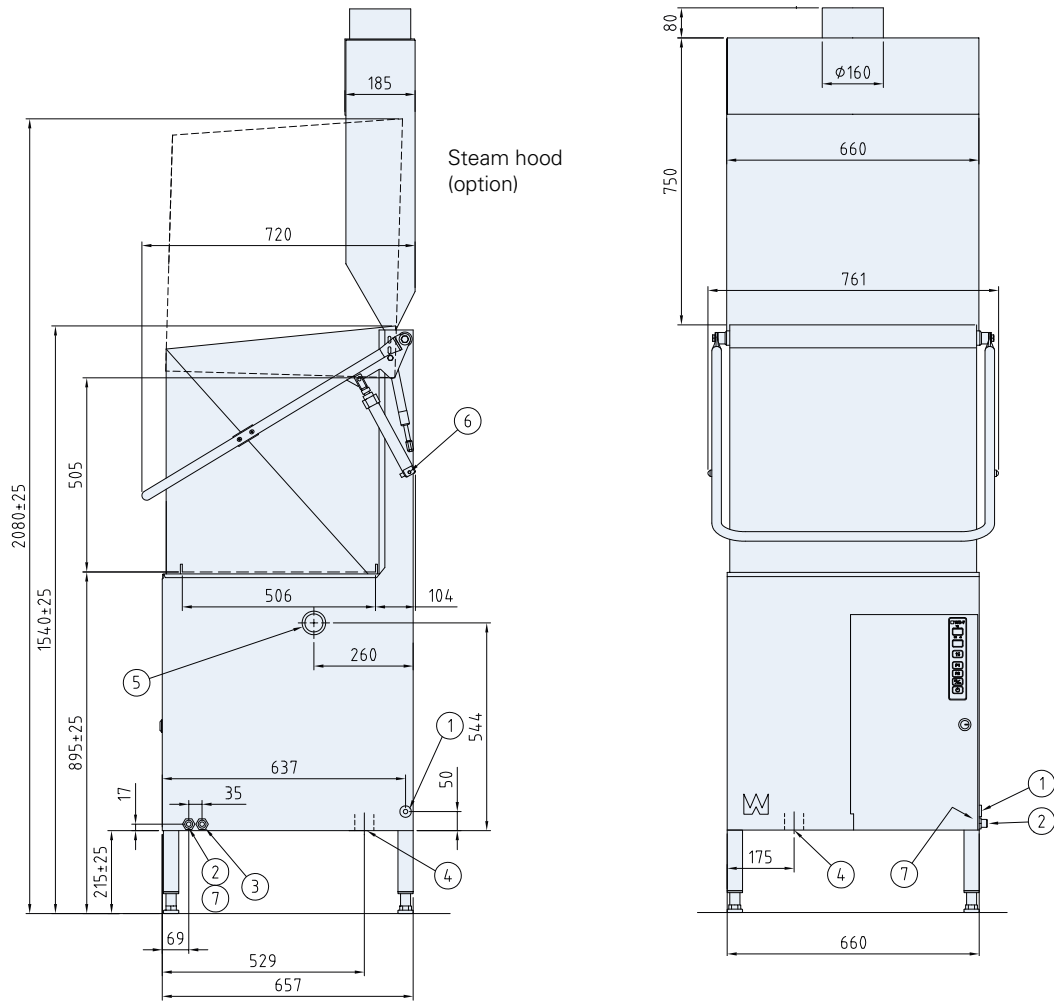


- 1. Hot water connection
- 2. Cold water connection
- 3. Electrical connection
- 4. Floor drain
- 5. Legs

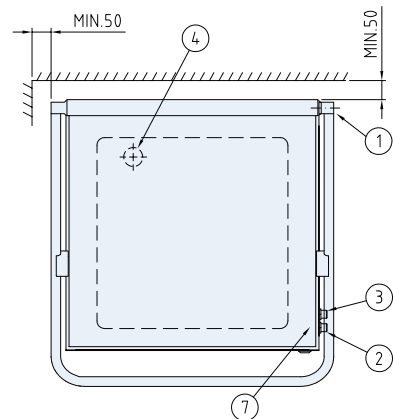
Sink connection



■ Dimensional drawings



1. Electrical connection
2. Hot water connection R $\frac{1}{2}$
3. Cold water connection R $\frac{1}{2}$ (on machines with automatic hoods)
4. Drain connection \varnothing . 50 3 l/sec
5. Plugged hole for detergent hose
6. Bleeding screw lifting cylinder (on machines with automatic hoods)
7. Water pressure outlet for detergent dosage



BECAUSE WE DO CARE



Rhima Australia Pty Ltd
72-74 Woodlands Dve
PO Box 605
Braeside, Vic 3195

Ph: 03 8586 5444
Fax: 03 8586 5454

www.rhima.com.au

rhima
the power of clean